



IMPACT ASSESSMENT REPORT

**CSR CONTRIBUTIONS MADE BY TECH MAHINDRA LTD TO MAHINDRA
EDUCATIONAL INSTITUTIONS**

CA SURYA KIRAN M

CONTENTS

- Report
- Executive Summary
- Detailed Report
- Appendix

Report

To,
The Board of Directors,
Mahindra Educational Institutions,
Hyderabad.

Subject: Submission of CSR Impact Assessment Report for FY 2025-26

Dear Sir/Madam,

I am pleased to submit herewith the Impact Assessment Report relating to the CSR contributions made by Tech Mahindra Limited to Mahindra Educational Institutions (MEI) for the financial year 2025-26.

This assignment was undertaken in accordance with the mandate received from your good office, with the objective of evaluating both the tangible and intangible outcomes resulting from the CSR funding extended towards higher education infrastructure and allied initiatives implemented through MEI/Mahindra University.

Scope of work

The assessment was conducted with the following key objectives to:

- Verify the deployment and end-use of CSR funds contributed by Tech Mahindra to MEI.
- Evaluate the overall outcomes and effectiveness of CSR initiatives during FY 2025-26
- Assess alignment of impact with the CSR vision and objectives of Tech Mahindra.
- Suggest high-level areas for improvement, if any, for ongoing and future initiatives.

Key limitations

- The report is based on documentation and information made available by the management of MEI, and no independent financial or statutory audit has been conducted as part of this assignment.
- Time constraints limited our ability to conduct direct interactions with faculty members and students, hence beneficiary-level insights were drawn primarily from secondary interactions and internal stakeholders.
- The findings are intended to provide a qualitative and directional view, and do not represent an audit opinion or assurance engagement under professional auditing standards.

I am herewith enclosing the executive summary and detailed report for your perusal. I trust that this report will serve as a useful input in evaluating the effectiveness of your CSR contributions and support informed decision-making for future initiatives.

Thank you for the opportunity to be associated with this important initiative.

Yours faithfully,

For M. Surya Kiran & Co.,

Chartered Accountants



M Surya Kiran

Chartered Accountant

Membership No.: 221885

Date: April 13, 2026

Place: Hyderabad

EXECUTIVE SUMMARY

Background:

Tech Mahindra Limited (TechM) is a prominent global Information, Communications, and Technology (ICT) company based in India, renowned for providing innovative solutions and services to a diverse range of international clients, including Fortune 500 companies. Mahindra Educational Institutions (MEI), established by TechM as a not-for-profit subsidiary, is dedicated to fostering education, research, innovation, and technological development. Under MEI, Mahindra University (MU) was founded to offer diverse educational programs across various academic fields, reflecting a strong interdisciplinary approach and rapidly expanding infrastructure, significantly supported by TechM's corporate social responsibility (CSR) initiatives.

Summary of CSR Objectives:

Tech Mahindra's CSR vision, encapsulated as "Empowerment through Education," highlights several strategic objectives:

- Demonstrate commitment to societal welfare through ethical business practices, responsible governance, and transparency.
- Actively support sustainable development initiatives aligned with national and regional development agendas.
- Establish and uphold exceptional standards and replicable models for delivering high-quality educational and social services.
- Foster a culture of empathy, equity, and social responsibility among employees, encouraging active participation in community development.

The specific areas of focus for TechM's CSR activities encompass educational enhancement, improving employability through skill development, advancing technical education, and promoting inclusive opportunities for underserved and marginalized communities.

Contributions received:

During the year, MEL received ₹ 79.64 Crores from Tech Mahindra Limited.

Key tangible impacts:

- **Infrastructure enhancement:** A significant investment totaling ₹ 79.64 Crores has been directed towards developing advanced facilities at Mahindra University. These include construction and enhancement of hostels, refurbishment works for classrooms, BT labs, computer labs, Guesthouse, and ECSE academic Infrastructure like labs and office spaces etc.
- **Improved access to quality education:** A pronounced positive impact has been observed in terms of accessibility and quality of higher and technical education, benefiting numerous students from diverse socioeconomic backgrounds.
- **Scholarships and financial aid:** Over 700+ meritorious students, including a specific focus on girl students and students from the Northeastern states, have received scholarships, considerably broadening their educational opportunities.
- **Increased placement opportunities:** Enhanced infrastructure and educational quality have led to increased placements of MU students in renowned national and international corporations, underscoring the effectiveness of TechM's CSR educational initiatives.

- **Innovation and research:** Significant growth in research output and innovation year, highlighting MU's rising prominence as a research-focused educational institution.

Key intangible impacts:

- **Elevated social awareness:** TechM's CSR initiatives have fostered greater community awareness and responsiveness towards sustainable development, environmental stewardship, and the importance of educational excellence.
- **Enhanced brand equity:** The initiatives have effectively strengthened the brand reputation of Mahindra, positioning it beyond corporate identity into a leading educational and innovative institution, positively influencing societal perceptions.
- **Institutional reputation:** Mahindra University's enhanced academic quality and innovation have significantly contributed to the improved public image of Tech Mahindra, reinforcing its identity as a socially responsible corporate entity.

Highlighted key findings and recommendations:

- **Positive stakeholder reception:** CSR projects undertaken by Tech Mahindra are highly impactful and have been met with strong positive feedback from various stakeholders, including students, faculty, and community members.
- **Tangible educational outcomes:** The strategic investment in infrastructure and educational programs has substantially enhanced student outcomes, institutional growth, and overall educational quality.
- **Areas for improvement:** Attention is required in streamlining administrative processes, maintenance, and sustainable management of developed infrastructure to ensure long-term operational efficiency and sustainability.

Limitations of the assessment

- **Time constraints:** The entire assignment was executed within a tight timeline; thus, comprehensive field validation or prolonged qualitative engagement was limited.
- **Stakeholder coverage:** The study could not include direct interviews with students and faculty due to scheduling and access constraints. Hence, stakeholder voice representation is not fully inclusive.
- **Reliance on secondary data:** A significant portion of the report is based on data and documentation provided by MU and MEI without independent audit or verification. No forensic or financial audit was conducted by me.
- **Non-financial metrics estimation:** Tangible impact (e.g., improved student access) was assessed, but longitudinal tracking of educational quality or alumni performance is outside the scope.

DETAILED REPORT

1.1 Background

Brief Overview of Tech Mahindra & Its CSR Policy:

Tech Mahindra Limited (TechM) is a global leader in the Information, Communications, and Technology (ICT) sector, known for delivering innovative and impactful solutions to a diverse set of international clients, including Fortune 500 companies. Recognizing its role as a responsible corporate citizen, Tech Mahindra places strong emphasis on Corporate Social Responsibility (CSR), anchored by its guiding vision of "Empowerment through Education." This CSR framework demonstrates the company's commitment to ethical practices, sustainable growth, quality educational initiatives, and fostering a culture of empathy and social responsibility within its workforce and community.

Introduction to Mahindra University and MEI:

Mahindra Educational Institutions (MEI), established as a not-for-profit subsidiary of Tech Mahindra, reflects the organization's deep-rooted belief in the transformative power of education. MEI's flagship initiative, Mahindra University (MU), was founded with the mission of becoming a distinguished educational institution, providing quality education, pioneering research, innovation, and technological advancement. MU is committed to nurturing talent through interdisciplinary programs, innovative teaching methodologies, and practical skill development, significantly supported by Tech Mahindra's strategic CSR contributions.

Historical and Current Context:

MEI's journey began in 2014 with the establishment of Mahindra École Centrale (MEC), in collaboration with the prestigious École Centrale Paris. Over the years, MEC evolved and expanded into what is now Mahindra University in 2020, marking a significant

milestone in its journey. This evolution represents a strategic growth focused on developing comprehensive educational programs spanning multiple disciplines, including Engineering, Management, Law, Education, and Design & Hospitality management. Presently, Mahindra University continues its trajectory of rapid growth, enhancing its infrastructure, expanding research capabilities, and broadening its academic offerings, bolstered by ongoing support from Tech Mahindra's dedicated CSR initiatives.

1.2 Purpose of the Report

Objectives and Scope:

The primary objective of this report is to assess the impact of CSR contributions provided by Tech Mahindra Limited to Mahindra Educational Institutions during the fiscal year 2025-26. Specifically, this report aims to:

- Evaluate the tangible and intangible outcomes resulting from Tech Mahindra's CSR contributions.
- Verify the effective utilization of CSR funds by MEI.
- Assess the alignment of outcomes with the stated CSR objectives of Tech Mahindra.
- Provide strategic recommendations for potential improvements or course corrections in ongoing CSR initiatives.

Assessment period:

The scope of this report exclusively covers the financial year 2025-26, delivering a thorough evaluation of Tech Mahindra's CSR investments and their tangible and intangible impacts during this period.

2: Corporate Social Responsibility (CSR) Framework at Tech Mahindra

2.1 Legal background (Companies Act, 2013)

CSR framework in India is guided by Section 135 of the Companies Act, 2013. Law mandates specific obligations for companies based on their financial performance. Under these provisions:

- Companies are required to spend at least 2% of their average net profits from the preceding three financial years on eligible CSR activities.
- Companies must establish a dedicated CSR Committee composed of a minimum of three directors, one of whom must be an independent director.
- The CSR Committee is responsible for formulating and recommending CSR policies, as well as monitoring and reporting on their implementation.
- Companies must include a comprehensive disclosure of their CSR policy, initiatives, and expenditure in their annual reports.

Mandatory CSR Spending requirements:

Criteria	Threshold
Net worth	₹ 500 crore or more
Annual turnover	₹ 1000 crore or more
Net profit	₹ 5 crore or more

2.2 Tech Mahindra's CSR Philosophy

Tech Mahindra's CSR philosophy is succinctly captured by the vision: "Empowerment through Education." The core belief underlying this philosophy is that quality education and skill development are powerful tools for driving sustainable and inclusive social change.

Objectives of Tech Mahindra's CSR Initiatives:

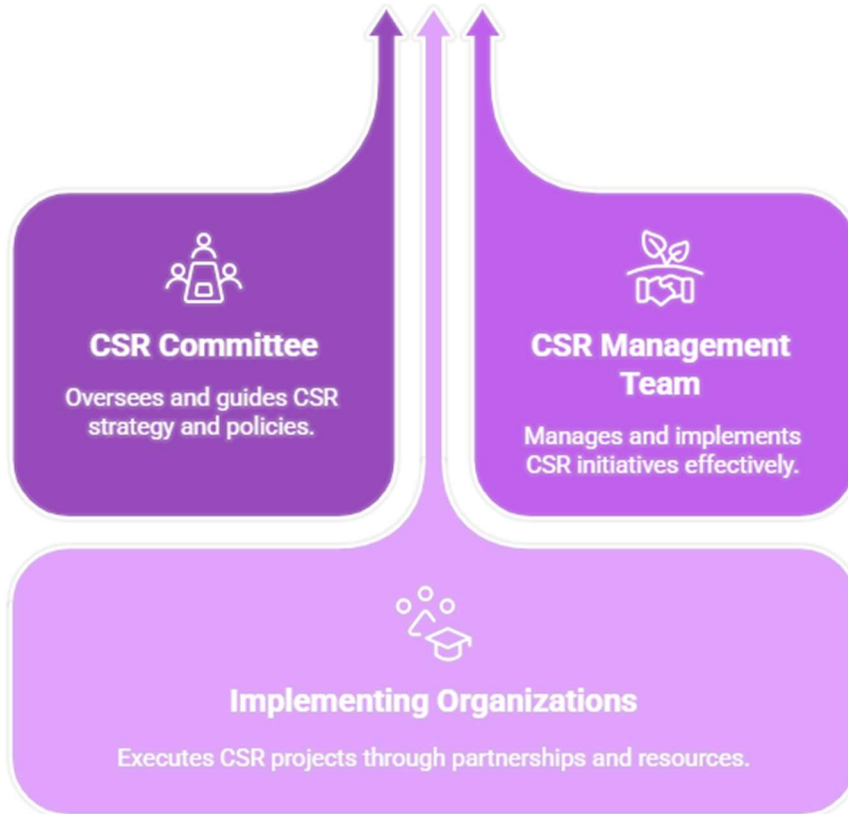
- To conduct business ethically and responsibly, emphasizing transparent governance practices.
- To actively support and align with the nation's sustainable development goals and broader social initiatives.
- To maintain excellence in the delivery of educational and social sector programs by establishing scalable and replicable models.
- To cultivate a compassionate corporate culture, motivating employees to engage proactively in community service.

Primary focus areas:

- **School education:** Enhancing access and quality in school education through capacity building and educational support programs.
- **Employability and skill development:** Providing market-oriented training and employment opportunities to youth, particularly those from underserved communities.
- **Technical education:** Establishing institutions of higher learning and fostering research and development collaborations to advance technical education standards.
- **Empowerment of marginalized communities:** Focusing initiatives on the upliftment and empowerment of women, differently abled individuals, and economically disadvantaged groups.

2.3 Governance & Management

CSR Governance Structure at Tech Mahindra:



Governing Body of Mahindra University:

Name	Role	Designation
Mr. Anand Mahindra	Chairman	Chancellor (Chairman)
Dr. Yogita Rana (IAS)	Member	Principal Secretary (Higher Education) Govt. of Telangana
Ms. Shobana Kamineni	Member	Promoter Director, Apollo Hospitals Enterprise Limited & Executive

		Chairperson, Apollo Health Co Ltd and Apollo Pharmacies Ltd
Mr. Ranjan Pant	Member	CEO Advisor, Ex Bain
Ms. Krishna Kumari Palle	Member	Vice President, Delivery and Operations Head - EMEA
Dr. Yajulu Medury	Member	Vice Chancellor, Mahindra University
Col Rajive Chauhan	Non-Member Secretary	Registrar, Mahindra University

Board of Management of Mahindra University:

Name	Position
Dr. Yajulu Medury	Chairman
Mr. CP Gurnani	Member
Dr. Anish Shah	Member
Mr. Mohit Joshi	Member
Ms. Anuja Mahindra Sharma	Member
Dr. Mukti Khaire	Member
Mr. Alok Kshirsagar	Member
Mr. Zhooben Bhiwandiwal	Member
Mr. Ulhas Yargop	Member
Mr. MM Murugappan	Member
Mr. Harshvendra Soin	Member

Mr. Shivanand Raja	Special Invitee
Mr. Milind Kulkarni	Special Invitee
Dr. Bishnu Pal	Member
Dr. Arya Kumar Bhattacharya	Member
Dr. Anadi Saran Pande	Member
Dr. Shashidhar Nanjundaiah	Member
Dr. Rajinder Singh Chauhan	Member
Dr. Battula Kalyana Chakravarthy	Member
Dr. Thirugnanasambantham K	Member
Dr. Jayaram Raghunath	Member
Col Rajive Chauhan	Non-Member Secretary

3: Methodology & Approach

3.1 Methodology overview

To thoroughly assess the impact of Tech Mahindra's CSR initiatives, a mixed-method approach combining both quantitative and qualitative techniques was employed. This method enabled a comprehensive evaluation by providing both statistical data and in-depth insights.

Assessment method:

- **Quantitative analysis:** Review of expenditure data, infrastructure development details, student admissions, and placements.
- **Qualitative analysis:** Stakeholder interviews, focus groups, site visits, and in-depth discussions.

Steps involved:

1. Identification and collection of primary and secondary data.
2. Conducting structured interviews and focus group discussions with key stakeholders.
3. Site visits to observe and verify infrastructure developments.
4. Quantitative data analysis to measure tangible outcomes such as educational infrastructure and placements.
5. Qualitative analysis to understand intangible impacts, such as perceptions and experiences of stakeholders.
6. Consolidation and triangulation of data to ensure accuracy and comprehensiveness.
7. Development of insights and actionable recommendations.

3.2 Sources of data

The study drew from diverse and credible sources of information to ensure robust and reliable findings.

Primary data sources:

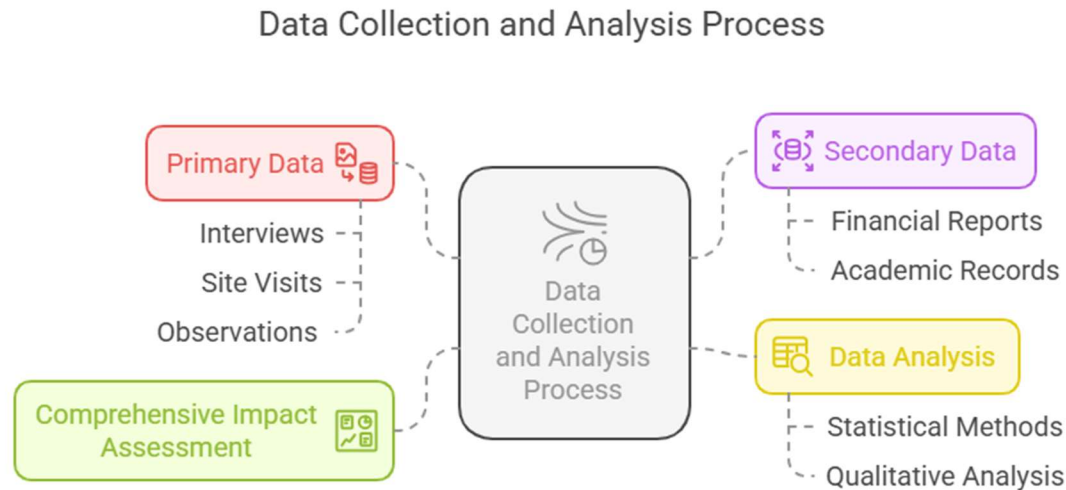
- Interviews with university administration (Vice Chancellor, Registrar, CFO).
- Focus groups and discussions with faculty and staff.
- Direct observation and documentation during site visits.

Secondary data sources:

- Financial statements and expenditure reports provided by Mahindra Educational Institutions.
- Academic records, student admission, and placement data.
- Patents and research documentation.

- Existing impact assessment reports and organizational documents.

Data collection process:



3.3 Limitations of the Study

- **Time constraints:** Limited timeframe available for extensive fieldwork and stakeholder engagement.
- **Data availability:** Dependence on timely and accurate data provision by various departments.
- **Scope of interviews:** Interviews primarily conducted with administrative staff; limited direct engagement with students.
- **Depth of qualitative data:** Potential limitations in capturing nuanced qualitative insights due to time restrictions.

4: Detailed Impact Assessment

4.1 Qualitative impact

Methodology: The qualitative assessment involved detailed interviews, focus group discussions, and on-site observations. Emphasis was placed on understanding stakeholder experiences and perceptions related to CSR-funded initiatives.

Stakeholder interactions: In-depth interactions were held with university leadership, administrative staff, and faculty members to capture nuanced insights.

Student profiles: During the 2025-26 academic year, MU saw diverse student enrollment, with increased participation from underrepresented regions, reflecting broader geographic outreach and inclusion.

Program outcomes:

- Enhanced engineering knowledge and analytical skills.
- Improved problem-solving and critical-thinking capabilities.
- Increased awareness of societal, ethical, and environmental issues.
- Greater proficiency in teamwork and interdisciplinary collaborations.
- Stronger communication and leadership skills.

Students admitted into University:

During the academic year 2025-26, Mahindra University (MU) successfully admitted a total of 2,119 students across undergraduate, postgraduate, and doctoral programs.

The consistent rise in enrolment reflects the university's growing appeal, marked by increased participation from diverse regions across India and a notable uptick in female student admissions. This positive trend underscores the expanding reach and influence of the Mahindra University brand. Importantly, the growing visibility of MU also reinforces the broader outreach of Tech Mahindra's brand, aligning seamlessly with the company's CSR vision of promoting inclusive and quality education.

The detailed breakdown of MU admissions is as follows:

Details	AY 2025-26
Total Admissions	2,119
Total Application Received	21,897
NRI Applications	240
Admissions North& East	68
NRI Admissions	62
Admitted Students Gender Diversity: (Boys: Girls)	54.8 : 45.2

Student enrolment: Academic year 2025-26

Programme	Type	Count
B.Tech	UG	941
M.Tech/M.Sc.	PG	160
Ph. D (various departments)	PG	77
School of Management	UG	486
School of Management	PG	58
School of Law	UG	180
School of Law	PG	33
IMSoE	PG	24
Media	UG	63
Media	PG	7
Design	UG	64
Design	PG	17
SOHM	UG	9
Total		2,119

During the current year, the School of Hospitality and Management was launched offering an undergraduate program in Hotel Management.

Programme-wise details: PG & Ph. D

Programme	Type	Count
M.Tech	PG	150
M.Sc.	PG	10
LLB (Hons.)	PG	25
MA Education	PG	42
Ph.D. Engineering	Ph.D.	77
Ph.D. Business Management	Ph.D.	8
Ph.D. Law	Ph.D.	8
Ph.D. Education	Ph.D.	2
Ph.D. Design	Ph.D.	2
Ph.D. Media	Ph.D.	2
MBA	PG	50
Total		376

Programme-wise details: UG

Programme	Count
B.Tech. Computer Science and Engineering	170
B.Tech. Artificial Intelligence	154
B.Tech. Electronics and Computer Engineering	54
B.Tech. Electronics and Communication Engineering	98
B.Tech. Computational Biology	37
B.Tech. Civil Engineering	24
B.Tech. Bio-Technology	70
B.Tech. Mechatronics	37
B.Tech. Computation Mathematics	60
B.Tech. Mechanical Engineering	34
B.Tech. VLSI Design and Technology	30
B.Tech. Aerospace Engineering	31
B.Tech. Nano Technology	5
Integrated B.Tech. and M.Tech. Bio-Technology	15
Integrated B.Tech. and M.Tech. Computer Science and Engineering	29
BBA Digital Technologies	271
BBA Computational Business Analytics	59
BBA Applied Economics & Finance	53
BA, LLB (Hons.)	56
BBA, LLB (Hons.)	118
B. Tech-LLB (Hons.)	6
B.Design	64

BJMC	31
B. Tech Computation and Media	32
BBA(Hons.) Hospitality Management	9
Total	1,743

List of Patents filed/published/granted during 2025-26

1. Sreedhar Madichetty (Mahindra University) and Sukumar Mishra (IIT Delhi) "Hybrid hardware Maximum Power Point for Solar Photovoltaic Panels"; Application Number: 202141029196, Indian Patent Filed on 29th June 2021; Publication Date: 14/01/2022; Date of Grant: 14/11/2025; Patent Number: 573831.
2. Dibakar Roy Chowdhury, Shreeya Rane, and Shriganesh Prabhu "Evanescent Order driven deep sub-wavelength particle detector employing all-dielectric terahertz met grating (sub-wavelength grating)", Indian Patent Filed, Application number: 202141029457; Filed on 30/06/2021; Publication Date: 24/12/2021; Date of Grant: 10/12/2025; Patent No: 575589.
3. Arya Kumar Bhattacharya, "Process-Drift-Insulated Adaptive Critic System for Automated Adaptation of Artificial Neural Networks Controlling Real Time Industrial Processes", Indian Patent Filed on 20/11/2024; Application Number: 202441090257.
4. P. Jabaseelan, R. Ganguly, S. Mandal, Shyam S. Rao, Prathap Kumar, Arya Kumar Bhattacharya and Prafulla Kalapatapu," Method and Tape Casting Apparatus for determining Control Parameters Minimizing Defects in a Tape Casting Process", Indian Patent Filed on: 18/06/2024; Application Number: 202441046786.

5. Suprabha S. Dixit, Sayali Shrishail Harke, and Chitra Gurnani, "Metal sulfides-based device for on-site detection of heavy metal ions in water and method therefor", India Provisional Patent application 202441030989, Date: April 2024.
6. Gomathi Anandhanatarajan and Priya Pathmanathan. "A Method for Synthesis and Properties of Cerium Hydroxide and its Composites Thereof". India Provisional Patent application Number: 202441036742. Date of Publication: 16/05/2025.
7. Sreedhar Madichetty, "Artificial Intelligence (AI) Driven Cybersecurity System for Secure EV Charging (Application No.: 202441090809); Date of Publication: 11/04/2025.
8. Sreedhar Madichetty, "Immersion Cooling System for Lithium-Ion Battery Packs for Electric Vehicles (EV)" (Application No.: 202441090928); Date of Publication: 11/04/2025.
9. Souradyuti Ghosh, "A Glucose Measurement-Based Readout System for Assessing Activities Of Enzymes Or Enzyme Analogues, And Applications Thereof", Indian patent application number: 202541046355, Filed on: 14/05/2025.
10. Bhaskar Tamma, Bhuva Nagendra Singh Chowhan and Prema Kumar Paruchuri, "Tabletop Laser-Based Multi-Plane Visualization System with Adjustable Angular Projection and Dual-Orientation Mounting", Indian Patent Application no. 202541063709; Filing Date: 03 July 2025; Publication Date: 11/07/2025.
11. Mrityika Sengupta, "Aloephage Bacteriophage Functionalized Aloe Derived Carbon Nanodot Formulation for Antimicrobial and Anti Biofilm Applications", Application Number: 202541102271, Date of Filing: 23/10/2025; Date of Publication: 28/11/2025.

12. Somnath Ghosh, Bishnu P. Pal, Subhranshu Rout “Topologically Protected Optical Fiber for Robust Frequency Comb Generation”, Application Number: 202541102330; Date of Filing: 24/10/2025; Date of Publication: 28/11/2025.
13. Bharghava Rajaram, Rahul Dass and Harish Kumar Rachuri, “AI-Enabled Wearable Device for Real-Time Monitoring and behavioral Analysis of Smoking Tobacco”, Application Number: 202541117747, Date of filing of Application :26/11/2025, Publication Date: 19/12/2025.
14. Mohd Ataullah Khan and Venugopal Mandala, “Silica Fume-Modified Cementitious Coating for Steel Fiber”, Application Number: 202541121536; Date of filing of Application: 18/01/2026.
15. Rahul Dass and Rahul Roy, “Semantics-Based News Story Generation for Video-Hosting Platforms Using Artificial Intelligence”, Application Number: 202541047556, Date of filing of Application :16/05/2025, Publication Date: 06/02/2026.

Designs

16. Deep Seth, Sreejan Alapati and Siddharth Rajesh Patil, “A Cable Driven Elbow Exosuit Mimicking System”, Design No: 474229-001; Date: 19/09/2025; Date of Issue: 27/01/2026; Certificate of Registration of Design, The Patent Office, Government of India

Details of CSR funds utilized:

An amount of ₹ 79.64 Crores, was spent towards the following activities:

Project	Purpose
Hostel 4A, 4B	470 double occupancy rooms, roads, cafeteria etc.,
Mahindra University	Academic infrastructure for policy school Campus Surveillance works, Turnstiles and Boom Barriers, VNAB - Sustainability Lab, IT 01 GF Class rooms, IT 01 SF Class rooms, IT 02 GF Life Sciences Lab, MU Senate room, Task Building, VNAB-SOHM, School of Law & Sports Block, Café Adda, IT Cafeteria, IT CSAI Lab, School of Management, Sports Block. ECSOE -Civil Block.

CSR Contributions – direct beneficiaries:

Mahindra University graduates continue to be actively recruited by leading corporates across India—a testament to their well-rounded capabilities, technical proficiency, and readiness for the professional world. This consistent hiring pattern highlights the university’s success in nurturing talent that meets, and often exceeds, industry expectations.

More than just a reflection of academic performance, this is a strong endorsement of the university’s dynamic and forward-thinking curriculum. Designed in close alignment with real-world business needs, the programs at MU blend academic rigour with practical application, ensuring students are equipped not only with knowledge but with the skills to innovate, lead, and adapt in a rapidly evolving marketplace.

Additionally, the growing number of pre-placements offers, industry internships, and student achievements in national and international forums signal the deepening trust that employers place in the Mahindra University talent pool. It reinforces the institution's role as a pipeline for next-generation professionals and thought leaders.

Details of placements for academic year 2025-26:

Program	Students
Computer Science Engineering	106
Artificial intelligence	157
Electronics & Computer Engineering	10
Computation & Mathematics	14
Mechanical Engineering	3
Mechatronics	3
Nanotechnology	1
Civil Engineering	2
Total	296

4.2 Key Activities Undertaken During Academic Year 2025–26

During the academic year 2025–26, Mahindra University undertook a wide range of academic, cultural, sports, innovation, and community engagement activities supported directly and indirectly through CSR contributions from Tech Mahindra Limited. These activities played a crucial role in enhancing student development, institutional capacity, and social impact outcomes.

A. Academic, Research & Capacity Building Initiatives

- Conducted comprehensive orientation programmes for over 2,000 students across UG, PG, and PhD levels, focusing on academic preparedness, research exposure, and institutional integration.
- Organized ALIGN 2025 – International Academia-Industry Conclave, facilitating discussions on law, governance, taxation, and emerging global issues.
- Hosted Arguendo Moot Court Competition, strengthening legal research, analytical thinking, and advocacy skills.
- Expanded interdisciplinary education through introduction of new academic programs and research initiatives, contributing to enhanced academic depth and innovation.

B. Cultural & Community Engagement Activities

- Organized ROOTS @ MU 2025, a multi-day cultural festival promoting Indian heritage, arts, and community participation, including record-setting performances.
- Conducted Vortex – Halloween Carnival, encouraging student participation through experiential and inclusive engagement formats.
- Conducted AETHER the Annual Cultural Festival
- Hosted film festivals and creative platforms (VERVE, Palladium) to nurture artistic expression, storytelling, and student-led initiatives.
- Celebrated national and cultural events such as Mass Singing of Vande Mataram and Christmas celebrations, fostering inclusivity, unity, and cultural awareness within the campus.

C. Sports & Physical Development Initiatives

- Achieved notable success in inter-university competitions, including:

- Championship in Girls' Basketball at SNIST Sports Meet
- Basketball Championship at Anurag University and multiple podium finishes in chess and other sports
- Conducted Annual Sports Fest AIRO and National Sports Day events, promoting physical fitness, teamwork, and discipline.
- Supported individual sporting excellence, with students achieving national-level recognition across disciplines such as swimming, archery, shooting, and powerlifting.

D. Innovation, Technology & Skill Development

- Conducted AEON the Annual Technology Festival
- Organized GamesCon 2025, integrating esports competitions, game development (GameJam), and creative design (CreativeJam), enhancing digital and technical skills.
- Strengthened industry engagement through collaboration with PMI Pearl City Chapter, focusing on project management and employability skills.
- Facilitated student club activities (robotics, analytics, chess, etc.), promoting hands-on learning, innovation, and peer collaboration.

E. Sustainability & Social Responsibility Initiatives

- Conducted Youth & IT SDG Walk, promoting awareness on Sustainable Development Goals (SDGs) and encouraging youth participation in nation-building initiatives aligned with *Viksit Bharat 2047*.
- Encouraged responsible citizenship through activities focused on environmental awareness, sustainability, and social engagement.

F. Experiential Learning & Leadership Development

- Organized trekking expedition (Dayara Bugyal, Uttarakhand), promoting resilience, teamwork, and experiential learning under challenging conditions.
- Encouraged student participation in national-level competitions and outreach platforms, enhancing leadership, confidence, and external exposure.
- Strengthened leadership and discipline through NCC and student-led initiatives, contributing to holistic personality development

CSR contributions – indirect beneficiaries

Beyond the direct impact on students, the CSR contributions made by Tech Mahindra Limited during the financial year 2025-26 have created a ripple effect benefiting a broader ecosystem of stakeholders. These indirect beneficiaries include, but are not limited to, the following groups:

- **Faculty and Academic Staff:** Enhanced teaching infrastructure and academic resources have empowered educators to deliver more effective and engaging instruction. As of the latest academic cycle, Mahindra University employs a total of **630 staff members**, comprising **350 teaching faculty** and **280 non-teaching personnel**. This balanced workforce highlights the institution's commitment not only to delivering high-quality education through its academic staff but also to maintaining robust operational support systems through its dedicated non-teaching teams.
- **Administrative and Support Staff:** Investments in university operations and facilities have led to improved working conditions and increased efficiency.
- **Third-party Vendors and Service Providers:** Engagement in the construction, maintenance, and facility management projects supported by CSR funding has provided sustained employment and business opportunities to local vendors and contractors. As of the current reporting period, the university employs:

- **250 housekeeping staff** responsible for maintaining hygiene and cleanliness across the campus,
 - **250 security personnel** ensuring a safe and secure environment,
 - **230 catering staff** managing food services for students, faculty, and guests,
 - **68 maintenance staff** attending to the upkeep and repair of infrastructure,
 - **49 gardening staff** contributing to the upkeep of green spaces and aesthetic landscaping,
 - **30 office assistants** supporting administrative and clerical tasks, and
 - **11 pest control personnel** maintaining sanitary standards and preventing infestations.
- **Prospective Students and Families:** The elevated reputation of Mahindra University, supported by visible CSR-driven development, has influenced educational choices and aspirations in communities across the country.
 - **Surrounding Communities:** Development of university infrastructure and services has contributed to local economic activity, skill development, and improved public infrastructure in the vicinity of the campus.

These indirect impacts illustrate the broader societal value generated by Tech Mahindra's commitment to inclusive and sustainable development through education-focused CSR interventions.

4.3 Intangible & indirect impacts

Indirect benefits:

- Improved institutional reputation and brand equity.
- Increased community awareness of sustainable development.
- Enhanced student and faculty morale.

- Strengthened alignment between industry expectations and academic curriculum.
- Promotion of a culture of innovation and research.

5: Key Findings and Recommendations

Key findings:

- **Significant infrastructure improvement:** Major upgrades in educational infrastructure have positively impacted student experience and institutional capability.
- **Enhanced student outcomes:** Increased student admissions and improved placement statistics reflect effective CSR interventions in education quality and employability.
- **Positive stakeholder perception:** High levels of satisfaction among stakeholders (students, faculty, administration) regarding Tech Mahindra's CSR initiatives.
- **Improved brand reputation:** The CSR initiatives significantly enhanced the brand equity and societal perception of Tech Mahindra and Mahindra University.
- **Alignment with CSR Objectives:** Overall outcomes effectively aligned with Tech Mahindra's stated CSR objectives, demonstrating effective implementation and governance.

Recommendations:

- Introduce a structured system to track the progress and impact of CSR projects, ensuring funds are used effectively.
- Organize regular feedback sessions to better understand the needs and experiences of students and faculty.
- Incorporate eco-friendly practices in all future infrastructure projects to support environmental goals.

APPENDIX

Glossary:

AI	- Artificial Intelligence
CA	- Chartered Accountant
CFO	- Chief Financial Officer
COE	- Centers of Excellence
CSE	- Computer Science
CSR	- Corporate Social Responsibility
EEE	- Electrical and Electronics, Engineering
ERP	- Enterprise Resource Planning
HR	- Human Resources
ICT	- Information, Communications and Technology
IMSoE	-Indira Mahindra School of Education
IT	- Information Technology
JEE	- Joint Entrance Examination
JNTUH	- Jawaharlal Nehru Technological University, Hyderabad
ME	- Mechanical Engineering
MEC	- Mahindra Ecole Centrale
MEI	- Mahindra Education Institutions
MU	- Mahindra University
NRI	- Non-resident Indian
PG	- Postgraduate
PPO	- Pre-Placement Offer
R&D	- Research and Development
IMSoE	- School of Education
SOL	- School of Law
SOM	- School of Management
TechM	- Tech Mahindra Limited
TMF	- Tech Mahindra Foundation
UG	- Undergraduate
VC	- Vice-Chancellor

Images of the constructions/infrastructural development for which the CSR funds were used:

Civil Lab



HOSTEL IV A & IVB



HOSTEL IV B



LC Blocks (Apple Lab)



IT 1GF CLASS ROOMS



IT 2 FF CSAI Lab



Campus Infra – Boom Barriers



Campus Infra – Bio gas



IT Cafeteria & Café Adda



MEI Academics (Task Building, Bulk Kitchen etc.)





Sports Complex



IMSOE (Policy School)



VNAB – SODI, SOHM , Aerospace & Culinary



